

**Battery Trays / Heavy Duty Battery Trays / Refrigerator/Freezer Trays  
Gas Bottle Trays / Cargo Trays / Heavy Duty Cargo Trays  
2-Way Heavy Duty Trays / Special Application Trays**



This company division produces the largest selection of custom built sliding storage trays of their types in the U.S. transportation industry. The purpose of the products is to provide the user safe storage yet easy access for vehicle battery maintenance, LP gas bottle refilling, stowage and access of heavy cargo, portable refrigeration, as well as other onboard gear. These products are custom built for original equipment producers of trucks, buses, trailers, emergency vehicles, wreckers, as well as specialty and recreational vehicles. We also make them available through distributors and dealers. For the name of the nearest sliding tray installing dealer, contact our customer service department via (phone) 574-294-5611, (fax) 574-262-8845, or e-mail, [keyline@keylinesaleselkhart.com](mailto:keyline@keylinesaleselkhart.com). If you are a "DIY" person, we can also assist you in direct purchases.



53364 Marina Drive  
Elkhart, Indiana 46514  
574-294-5611/ FAX 574/262-8845  
[www.keylinesaleselkhart.com](http://www.keylinesaleselkhart.com)

# Journeyman® Tray Specifications



## Battery Trays Standard Duty

Model	Overall Width	Usable Width	Overall Depth	Usable Depth	Tray Height	Tray Weight	Tray Features
BT 20 DX	10 1/2"	7 3/4"	17 1/8"	11 3/4"	5"	17 lbs.	<ul style="list-style-type: none"> <li>▼ Powdercoat Finish</li> <li>▼ Positive Latching*</li> <li>▼ Ball Bearing Slides*</li> </ul>
BT 20 W	14 1/2"	11 3/4"	13 1/4"	7 3/4"	5"	17 lbs.	
BT 24 W2	22 1/2"	19 3/4"	18 3/4"	16 1/2"	5 1/2"	29 lbs.	
CBT 24 W	22 1/4"	19 1/2"	17 1/4"	11 1/4"	5"	25 lbs.	
BT 26 W	15 1/2"	13"	15 3/4"	13 3/4"	5"	24 lbs.	
COBT 27 2 RL	16 1/4"	13 3/8"	17 3/4"	14 1/2"	7"	23 lbs.	
BT 1315	12 1/2"	12 1/8"	15 3/4"	14 1/4"	2 3/4"	14 lbs.	
BT 2415	24 1/4"	23 3/4"	14 3/4"	13 1/2"	3 3/4"	29 lbs.	
NBT D	10 3/4"	8"	28 1/4"	23 1/2"	4"	32 lbs.	
NLBT D	10 3/4"	7 3/4"	23 1/4"	21 1/2"	3 1/2"	26 lbs.	
PBT 1616	16"	13 3/8"	15 1/2"	13 3/8"	2 7/8"	7 lbs.	▼ ABS Plastic Tray

\* Included on PBT 1616 Battery Trays

## Battery Trays Heavy Duty

Model	Overall Width	Usable Width	Overall Depth	Usable Depth	Tray Height	Tray Weight	Tray Features
BT 6T BXNR 3	39 3/4"	35 1/2"	28 1/4"	14 1/4"	7"	74 lbs.	<ul style="list-style-type: none"> <li>▼ Powdercoat Finish</li> <li>▼ Positive Latching</li> <li>▼ Roller Bearings</li> <li>▼ Heavy Gauge Steel</li> </ul>
NBT 3831	38"	33 1/2"	31 1/2"	20 1/2"	9 1/2"	73 lbs.	
NBT 2428 RL	24 7/8"	21 1/2"	28 1/2"	14 5/8"	7"	56 lbs.	
NBT 1830 RL	17 1/8"	13 1/4"	30"	21 1/2"	7"	52 lbs.	
NBT 2424 RL	24"	21 1/2"	23 1/4"	14 3/8"	7"	49 lbs.	
BT 8T BX	49 1/2"	45 1/2"	28 3/8"	14 1/2"	7"	82 lbs.	

## Refrigerator/Freezer Trays

Model	Overall Width	Usable Width	Overall Depth	Usable Depth	Tray Height	Tray Weight	Tray Features
KFT 3726 W	38 1/8"	33 1/4"	26 1/2"	21 3/4"	7 1/4"	68 lbs.	<ul style="list-style-type: none"> <li>▼ Powdercoat Finish</li> <li>▼ Positive Latching</li> <li>▼ Ball Bearing Slides</li> </ul>
KFT 3732 W	37 1/8"	33 3/8"	32 3/4"	21 3/4"	7 1/8"	75 lbs.	
NRFTM 460 W	36"	31 1/4"	24 1/4"	21 3/4"	7 1/2"	72 lbs.	
NRFTM 461 W	36"	31 1/4"	26 3/8"	21 3/4"	7 1/2"	74 lbs.	
NRFTM 660 RW	34"	31 1/2"	29 1/4"	19 5/8"	7"	34 lbs.	
RFTM 630 D RL	17 3/8"	14 1/2"	28"	25 1/2"	7 3/4"	35 lbs.	
RFTM 630 D RL 2X	19 1/8"	14 1/2"	28"	25 1/2"	7 3/4"	53 lbs.	
TSRFTM 60 D	20 3/4"	19 5/8"	36 1/2"	33 1/2"	7 1/4"	60 lbs.	
NRFTM 4024	41"	36"	24 1/4"	21 1/2"	8"	75 lbs.	
HFT 3722 RL	37 3/4"	31 3/8"	22 1/4"	19 5/8"	7 1/8"	62 lbs.	
GRFT 50 RL	28 1/4"	26"	20 1/2"	15 3/8"	9 3/4"	25 lbs.	

## Gas Bottle Trays

Model	Overall Width	Usable Width	Overall Depth	Usable Depth	Tray Height	Tray Weight	Tray Features
GBT D	10 3/4"	n/a	28 1/4"	n/a	3 1/2"	30 lbs.	<ul style="list-style-type: none"> <li>▼ Powdercoat Finish</li> <li>▼ Positive Latching</li> <li>▼ Ball Bearing Slides</li> </ul>
GBT W	26 1/4"	n/a	17 1/4"	n/a	3 3/4"	27 lbs.	
GBTN W	26 1/4"	n/a	13 1/4"	n/a	3 1/2"	27 lbs.	
GBTK HD	17"	n/a	60 1/4"	n/a	5"	55 lbs.	

## Cargo Trays Standard Duty

Model	Overall Width	Usable Width	Overall Depth	Usable Depth	Tray Height	Tray Weight	Tray Features
<b>COST 3722</b>	37 3/4"	34 3/4"	21 1/2"	19 1/2"	11"	50 lbs.	<ul style="list-style-type: none"> <li>▼ Powdercoat Finish</li> <li>▼ Positive Latching</li> <li>▼ Ball Bearing Slides</li> </ul>
<b>FTST 3421</b>	21 3/4"	19"	35 1/2"	32 1/4"	8 1/4"	47 lbs.	
<b>NCT 2040</b>	21 1/4"	18"	40 3/4"	37 3/4"	9 3/4"	68 lbs.	
<b>NCT 3841</b>	39"	36"	40 3/4"	37 3/4"	9 3/4"	75 lbs.	
<b>NCT 2842 RL</b>	42 1/4"	39 1/4"	28 1/2"	25 1/4"	6 3/4"	57 lbs.	
<b>NCT 2436 RL</b>	24"	21"	36 1/4"	34"	7"	66 lbs.	

## Cargo Trays Heavy Duty

Model	Overall Width	Usable Width	Overall Depth	Usable Depth	Tray Height	Tray Weight	Tray Features
<b>FTCT 3645 RL</b>	36 3/4"	32 1/4"	45 1/4"	42 1/2"	7 3/4"	110 lbs.	<ul style="list-style-type: none"> <li>▼ Powdercoat Finish</li> <li>▼ Positive Latching</li> <li>▼ Roller Bearings</li> <li>▼ Heavy Gauge Steel</li> </ul>
<b>FTCT 6045 RL</b>	60 3/4"	56 1/8"	45 3/4"	42 1/2"	8 1/4"	140 lbs.	
<b>FTCT 3892 RL</b>	38 1/2"	34"	92 1/4"	88 1/2"	8 3/4"	181 lbs.	
<b>FTCT 6592 RL</b>	64 1/2"	60"	92"	88 1/2"	8"	223 lbs.	
<b>FTCT 6746 RL</b>	66 3/4"	62"	46 1/2"	42 1/2"	8"	120 lbs.	
<b>NCT 2846 RL</b>	28"	24"	46 1/2"	42 1/2"	8"	68 lbs.	
<b>NUCT 4456 RL</b>	43 1/2"	43"	56 3/4"	54"	8 3/4"	111 lbs.	
<b>TSCT 3954 RL</b>	40"	35 1/4"	54 1/4"	51 1/2"	8"	95 lbs.	
<b>JACT 3242 RL</b>	32 3/4"	28"	42 1/4"	39 1/2"	9 3/4"	97 lbs.	
<b>JACT 4842 RL</b>	48 3/4"	44"	42 1/4"	39 1/2"	9 3/4"	119 lbs.	
<b>NUCT 4356 RL</b>	42 5/8"	42"	56 1/2"	53 5/8"	8 3/4"	110 lbs.	
<b>NUCT 4156 RL</b>	40 5/8"	40 1/8"	56 1/2"	53 5/8"	8 3/4"	109 lbs.	
<b>NUCT 4250 RL</b>	41 5/8"	41"	50 1/2"	47 5/8"	8 3/4"	106 lbs.	
<b>NUCT 5464 RL</b>	53 5/8"	53 1/8"	64 3/8"	61 3/4"	8 7/8"	136 lbs.	

## Cargo Trays 2 Way Heavy Duty

Model	Overall Width	Usable Width	Overall Depth	Usable Depth	Tray Height	Tray Weight	Tray Features
<b>T2W 3292 RL 2W</b>	32"	31 5/8"	92 3/8"	87 3/8"	7 7/8"	128 lbs.	<ul style="list-style-type: none"> <li>▼ Powdercoat Finish</li> <li>▼ Positive Latching</li> <li>▼ Roller Bearings</li> <li>▼ Heavy Gauge Steel</li> </ul>
<b>TICT 3890 RL 2W</b>	38 1/8"	37 3/4"	90 1/4"	85 3/4"	7 3/4"	139 lbs.	
<b>FTCT 3892 RL 2W</b>	38"	37 1/2"	92 1/4"	87 1/2"	8"	144 lbs.	
<b>FTCT 6592 RL 2W</b>	65"	64 1/2"	92 1/4"	87 1/4"	8"	176 lbs.	
<b>KSCT 2191 RL 2W</b>	21 1/4"	20 5/8"	91 1/2"	86 1/4"	7 3/4"	121 lbs.	
<b>NCT 3491 RL 2W</b>	34 1/8"	33 1/4"	91 1/2"	87"	7 5/8"	143 lbs.	
<b>NCT 4291 RL 2W</b>	42 1/4"	41 3/8"	91 1/2"	87"	7 3/4"	144 lbs.	
<b>TSCT 4292 RL 2W</b>	42"	41 3/4"	92 1/2"	87 3/4"	8"	144 lbs.	
<b>TSCT 5492 RL 2W</b>	54"	53 1/2"	92 1/4"	87 1/2"	8"	150 lbs.	
<b>NCT 4250 RL 2W</b>	42 1/8"	41 1/2"	50 3/8"	45 3/8"	7 7/8"	103 lbs.	
<b>NCT 3291 RL 2W</b>	31 1/2"	31"	91 1/2"	86 1/2"	8"	136 lbs.	

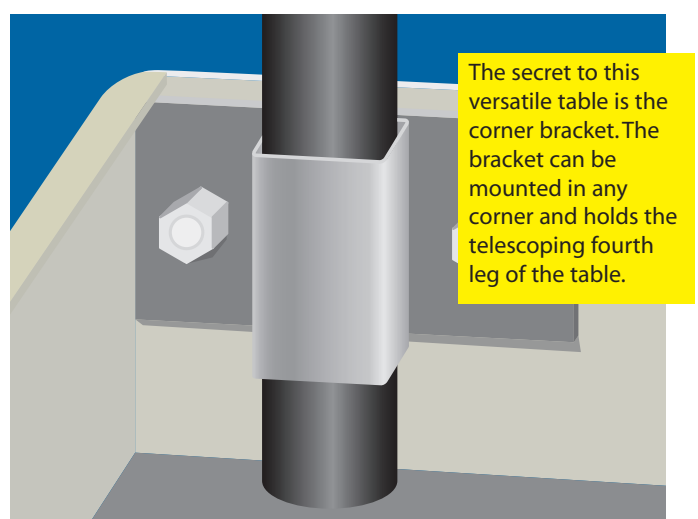
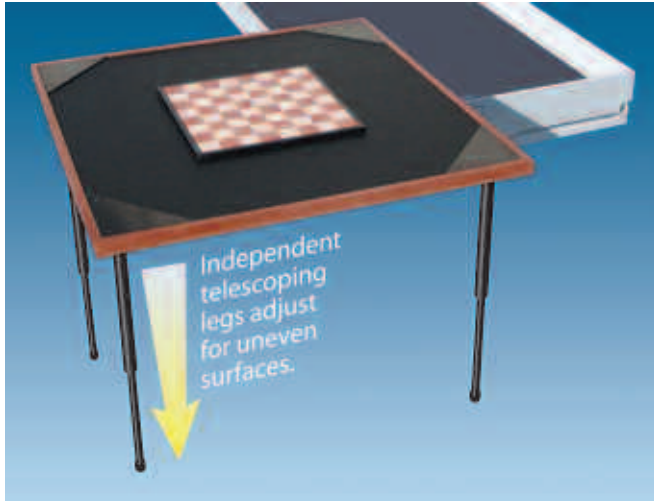
## Special Application Trays

Model	Overall Width	Usable Width	Overall Depth	Usable Depth	Tray Height	Tray Weight	Tray Features
<b>FTCT 3645 RL</b>	36 3/4"	32 1/4"	45 1/4"	42 1/2"	7 3/4"	110 lbs.	<ul style="list-style-type: none"> <li>▼ Powdercoat Finish</li> <li>▼ Positive Latching</li> <li>▼ Ball Bearing Slides, or where applicable, Roller Bearings</li> </ul>
<b>GTSM W</b>	37 1/4"	31 3/4"	27 1/4"	17 1/4"	5"	72 lbs.	
<b>TSTV 3424</b>	34"	34"	24"	24"	4"	45 lbs.	
<b>WST 1524 RL</b>	15 3/4"	13 3/8"	24"	22 5/8"	6 1/2"	26 lbs.	

# Journeyman® Stowaway Table for Cargo Trays



We offer this versatile table as an accessory for all Journeyman single direction and 2-way heavy duty cargo trays. It is available for original equipment and retro-fit installation. One or more table leg receiving brackets is/are mounted to the front corner(s) of the trays. The short leg of the table is placed in the bracket to support one corner. The table's height is adjustable from 27" to over 41". Its design includes a chess or checkerboard insert that provides the user the opportunity for relaxed gaming. The insert is easily removed for card playing, crafting, or serving.



- ▼ Overall size of the table is 41<sup>1</sup>/<sub>4</sub>" x 41<sup>1</sup>/<sub>4</sub>"
- ▼ Adjustable screw-on legs.
- ▼ Removable chess/checkers insert.
- ▼ Smooth playing/serving water resistant surface.
- ▼ Extra leg attachments for adjustable heights.

# Journeyman<sup>®</sup> Cargo Tray Chocks



We are pleased to introduce our **Journeyman cargo tray chock** for use on our 2-way heavy duty trays. It is fabricated from low density polyethylene plastic and is wedge shaped. We recommend that the D-ring on the cable lanyard be attached to the front of the stationary tray frame with self drilling screw provided.



**Packaged in single or double quantities**

**CAUTION:** Our cargo trays are not intended for use as platforms for standing, walking, or working. The chock is not to be used as a permanent latch. Any outward motion will cause the chock to disengage, freeing tray to roll normally.



When the chock is inserted under the roller bearing(s), it will hold the tray in the desired extended position.

To remove it from the hold position, simply pull the tray outward.

This product is available as optional equipment, and may be retrofitted on all Journeyman 2-way trays in field use.

- ▼ **Plastic chock tapered to fit under front roller bearing(s)**
- ▼ **Chock is attached to cable lanyard**
- ▼ **Lanyard is designed to be attached to front tray frame**
- ▼ **Self-tapping screw is provided for D-ring attachment**
- ▼ **Chock is available, as option, for new or “in use” trays**

# Journeyman® Battery Trays



This assortment of sliding storage trays provides a method of easy and orderly access for battery maintenance or replacement for the vehicle owner or servicing agent. They incorporate dependable vehicular hardware and ball bearing assemblies to assure outstanding performance when care is taken to prevent rusting, exposure to acid, road grime and the elements. Proper installation is necessary for maximum results.

See Specification Chart for dimensions, use, and shipping weight

**BT 20 DX**



**BT 20 W**



**BT 24 W2**



**CBT 24 W**



**BT 26 W**

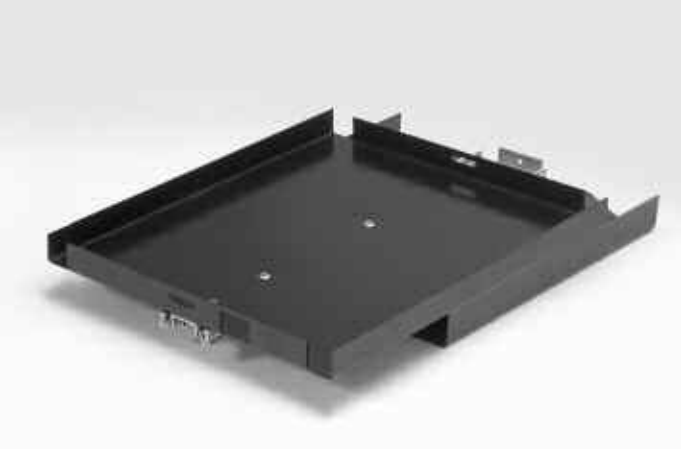


**COBT 27 2RL**



See Specification Chart for dimensions, use, and shipping weight

**BTE 1315**



**BT 2415**



**NBT D**



**NLBT D**



**PBT 1616**



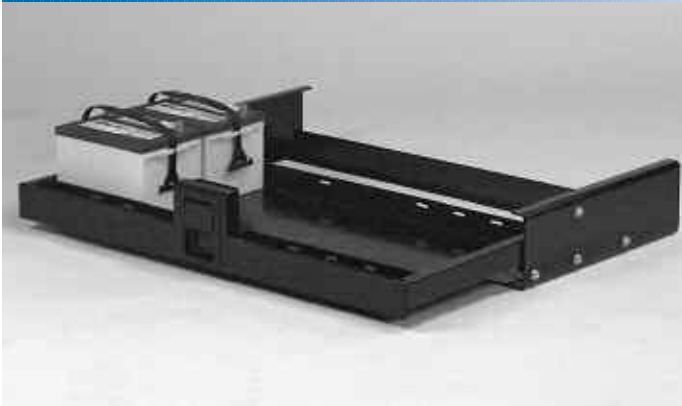
# Journeyman® Battery Trays / Heavy Duty



This assortment of sliding storage trays provides a method of easy and orderly access for battery maintenance or replacement for the vehicle owner or servicing agent. They incorporate dependable vehicular hardware and roller bearings to assure outstanding performance when care is taken to prevent rusting, exposure to acid, road grime and the elements. Proper installation is necessary for maximum results.

**See Specification Chart for dimensions, use, and shipping weight**

**BT 6 TBXNR 3**



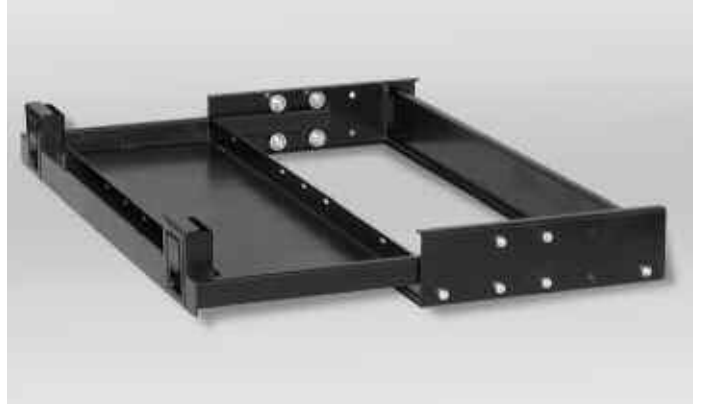
**NBT 3831**



**NBT 2428 RL**



**BT 8T BX**



**NBT 2424 RL**



**NBT 1830 RL**



# Journeyman® Refrigerator/Freezer Trays



This assortment of sliding storage trays provides a method of easy and orderly access for stored cold and frozen products for the vehicle owner or servicing agent. They incorporate dependable vehicular hardware and ball bearing assemblies to assure safe and outstanding performance when care is taken to prevent rusting, exposure to acid, road grime and the elements. Proper installation is necessary for maximum results.

See Specification Chart for dimensions, use, and shipping weight

**KFT 3726 W**



**NRFTM 460 W**



**NRFTM 461 W**



**NRFTM 660 RW**



**RFTM 630D RL**



**RFTM 630 DRL 2X**



# Journeyman® Refrigerator/Freezer Trays



See Specification Chart for dimensions, use, and shipping weight

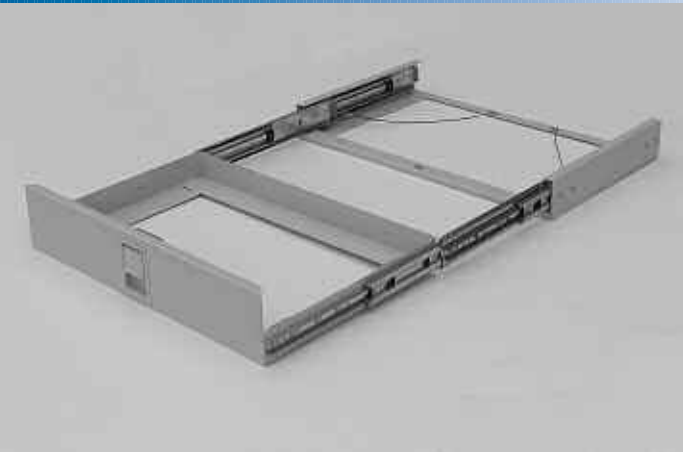
**TSRFTM 60 D**



**NRFTM 4024**



**HFT 3722 RL**



**GRFT 50 RL**



# Journeyman<sup>®</sup> Gas Bottle Trays



This assortment of sliding storage trays provides a method of easy and orderly access for gas bottle refilling and safe storage for the vehicle owner or servicing agent. They incorporate dependable vehicular hardware and ball bearing assemblies to assure safe and outstanding performance when care is taken to prevent rusting, exposure to acid, road grime and the elements. Proper installation is necessary for maximum results.

**See Specification Chart for dimensions, use, and shipping weight**

**GBT D**



**GBT W**



**GBTN W**



**GBTK HD**



**GBTT 40**



# Journeyman® Cargo Trays / Standard Duty



This assortment of sliding storage trays provides a method of easy and orderly access and safe storage of bulky on-board items for the vehicle owner. They incorporate dependable vehicular hardware and ball bearing assemblies to assure outstanding performance when care is taken to prevent rusting, exposure to acid, road grime and the elements. Overloading will cause premature product failure. Proper installation is necessary for maximum results.

**See Specification Chart for dimensions, use, and weight**

**COST 3722**



**FTST 3421**



**NCT 2040**



**NCT 3841**



**NCT 2842 RL**



**NCT 2436 RL**



# Journeyman® Cargo Trays / Heavy Duty



This assortment of sliding storage trays provides a method of easy and orderly access and safe storage of heavier and more bulky onboard items for the vehicle owner. They incorporate dependable vehicular hardware and roller bearings to assure outstanding performance when care is taken to prevent rusting, exposure to acid, road grime and the elements. Overloading will cause premature product failure. Proper installation is necessary for maximum results.

See Specification Chart for dimensions, use, and weight

**FTCT 3645 RL**



**FTCT 6045 RL**



**FTCT 3892 RL**



**FTCT 6592 RL**



**FTCT 6746 RL**

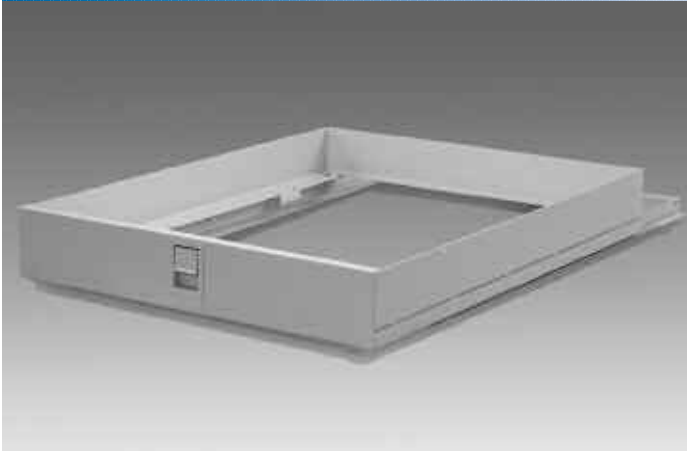


**NCT 4156 RL**



See Specification Chart for dimensions, use, and weight

**NUCT 4456 RL**



**TSCT 3954 RL**



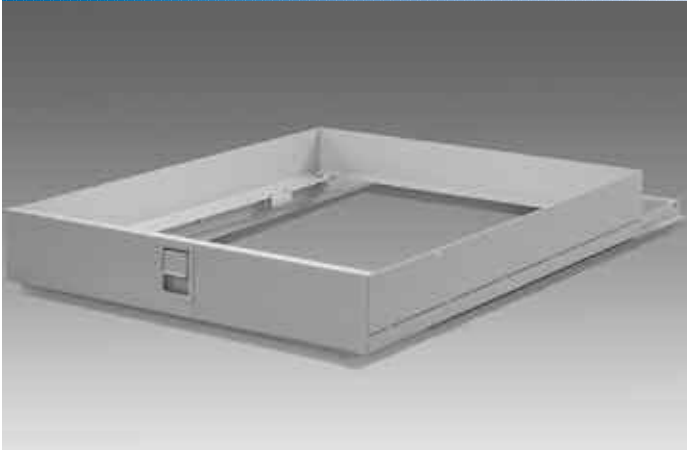
**JACT 3242 RL**



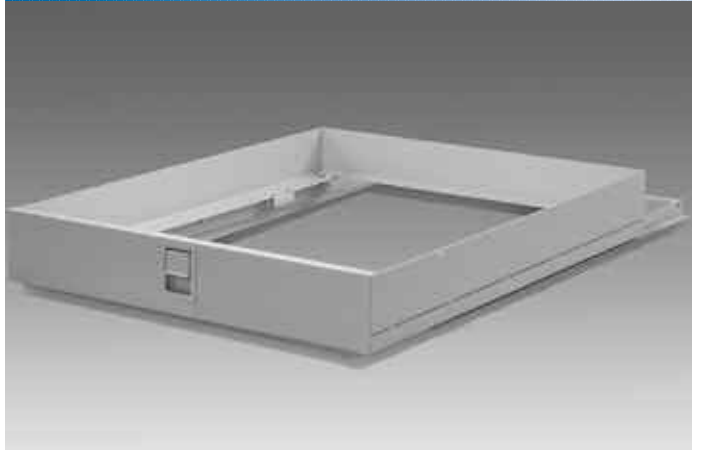
**JACT 4842 RL**



**NUCT 4356 RL**



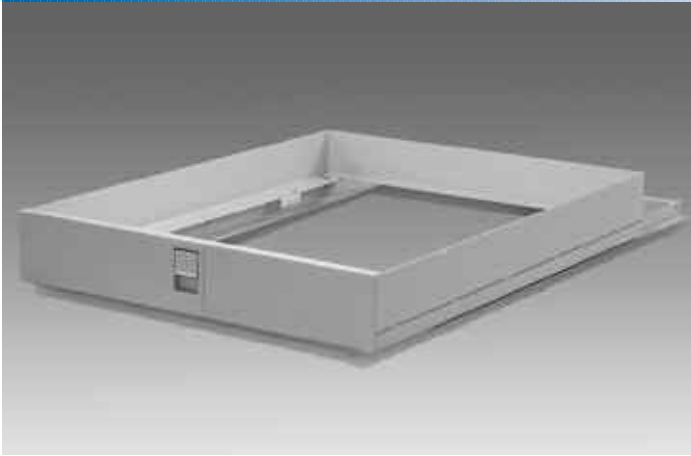
**NUCT 4156 RL**



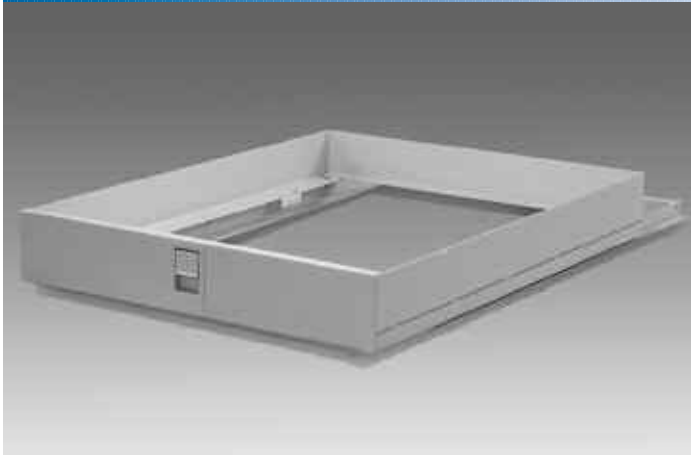


See Specification Chart for dimensions, use, and weight

**NUCT 4250 RL**



**NUCT 5464 RL**



# Journeyman<sup>®</sup> Cargo Trays / 2-Way Heavy Duty



This assortment of sliding storage trays provides a method of easy and orderly 2-way access and safe storage of heavier and more bulky onboard items for the vehicle owner. They incorporate dependable vehicular hardware and roller bearings to assure outstanding performance when care is taken to prevent rusting, exposure to acid, road grime and the elements. Overloading will cause premature product failure. Proper installation is necessary for maximum results.

**See Specification Chart for dimensions, use, and weight**

**KSCT 2191 RL 2W**



**T2W 3292 RL 2W**



**NCT 3491 RL 2W**



**TICT 3890 RL 2W**



**FTCT 3892 RL 2W**



**NCT 4291 RL 2W**



See Specification Chart for dimensions, use, and weight

**TSCT 4292 RL 2W**



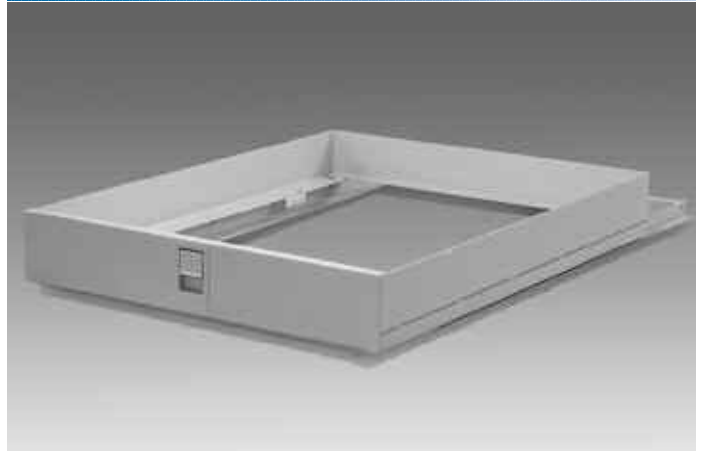
**TSCT 5492 RL 2W**



**FTCT 6592 RL 2W**



**NCT 4250 RL 2W**



**NCT 3291 RL 2W**



# *Journeyman*<sup>®</sup> Special Application Trays



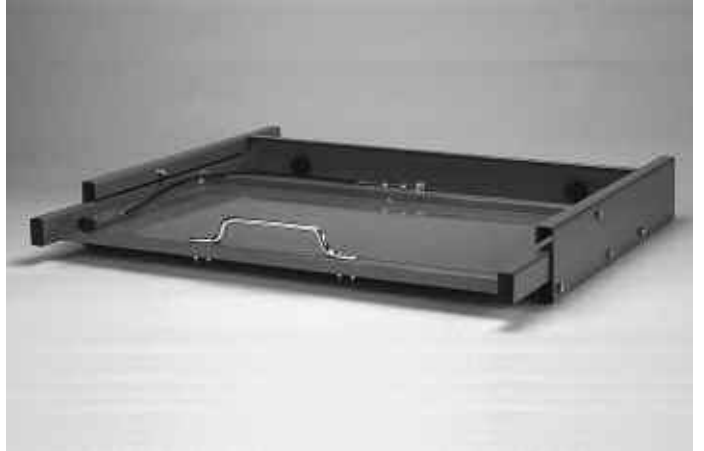
*This assortment of sliding storage trays provides a method of easy and orderly access for safe storage of specific items for the vehicle owner. They incorporate dependable vehicular hardware and ball bearing assemblies or roller bearings, depending upon the performance level. Care must be taken to prevent rusting, exposure to acid, road grime and the elements. Proper installation is necessary for maximum results.*

**See Specification Chart for dimensions, use, and shipping weight**

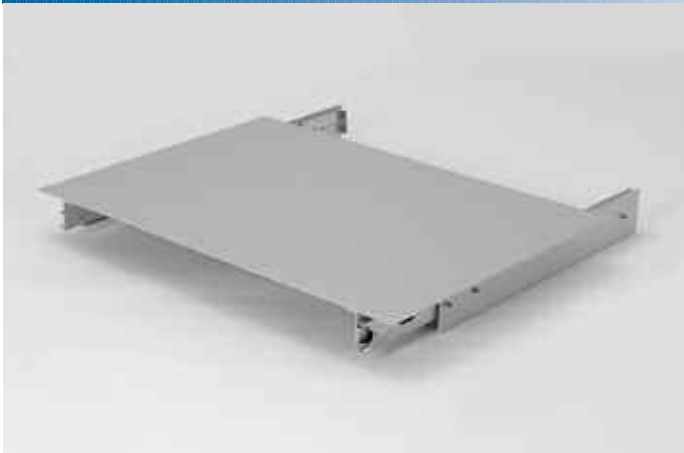
**FTCT 3645 RL**



**GTSM W**



**TSTV 3424**



**TSRFTM 60 D**

